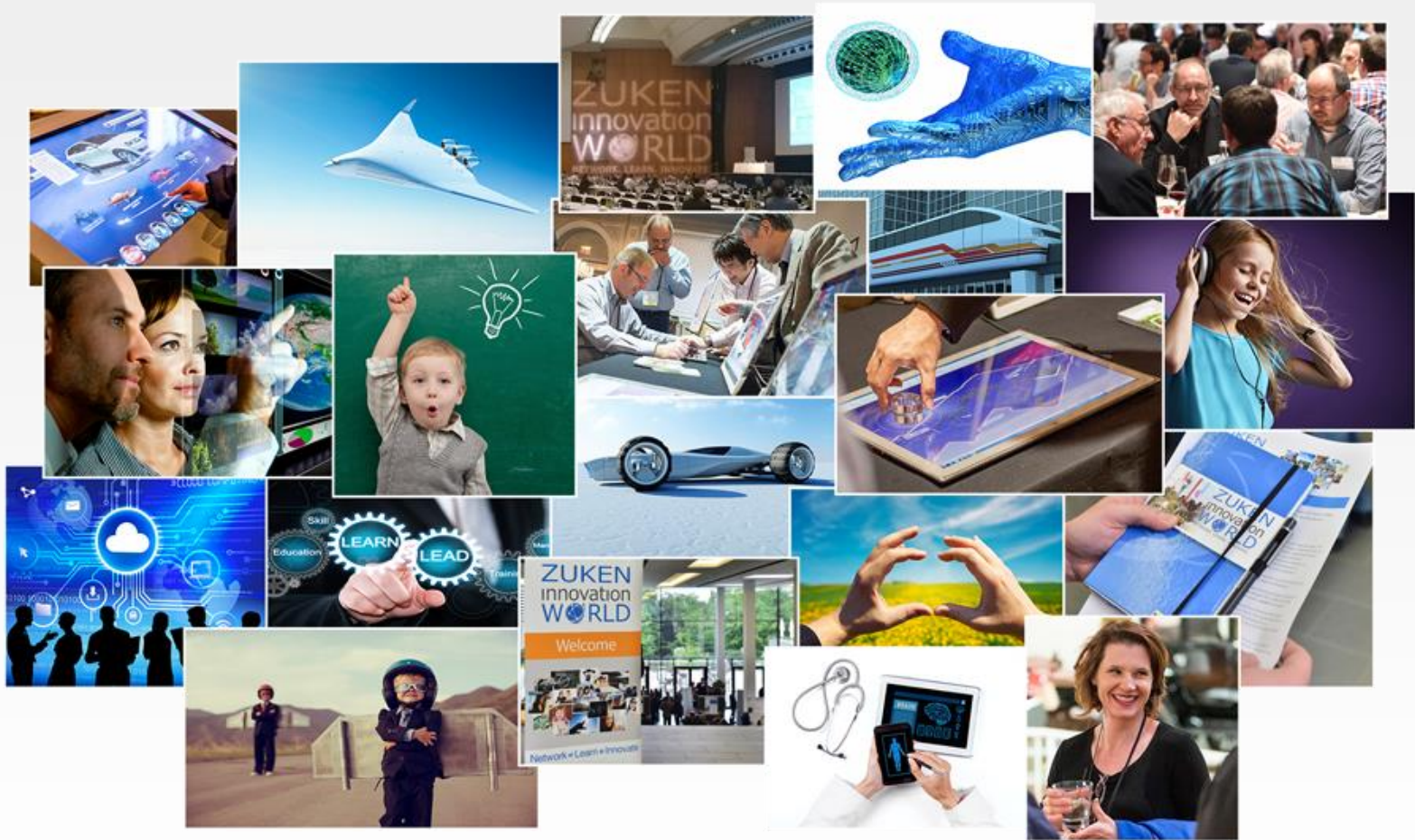


E³.series 2016 is now released!



E³.series 2016



New Feature Overview – headlines:

- Define zoom range dynamically for jump
- New graphic type “cloud”
- Sheet overview window
- Tabular terminal editor
- New variant definition
- New Tab in *Device Properties*
- Automatic connect and auto-route functionality in Schematic
- Handle all objects without option definition
- Copy/paste/move multiple block connector symbols
- Enhanced block functionality
- Enhanced Cable and Formboard Functions
- Models for block components
- Enhanced panel editing
- Simplified & Enhanced Multi-User Environment
- Enhancement to E³.RevisionManagement
- E³.WWPInterface Support of Terminal Configurators
- New Zuken eCl@ss user interface

Summary

- Navigate easily through entire project
- Accelerate development work
- Prevent errors after changes
- Work really in parallel
- Automate production

